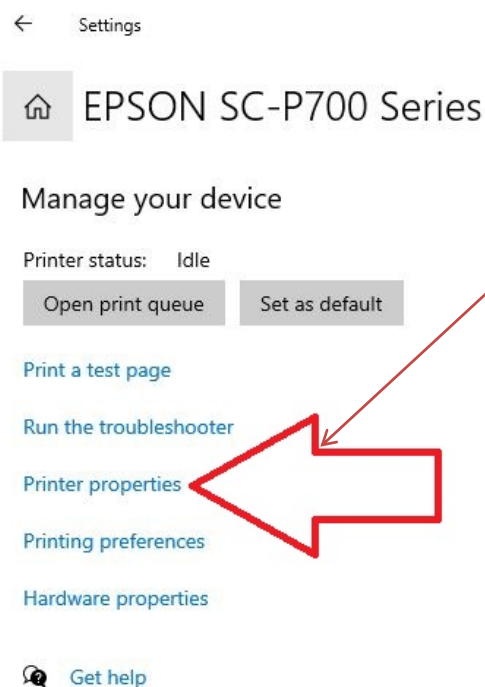




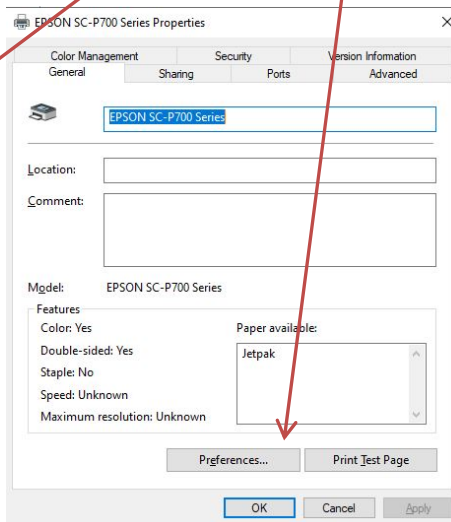
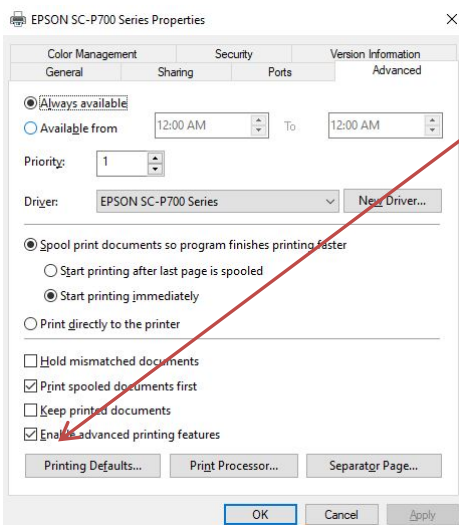
## Epson SC P700 Driver Recommendations

Please note that these settings are guidelines and can be adjusted to meet your individual preferences.

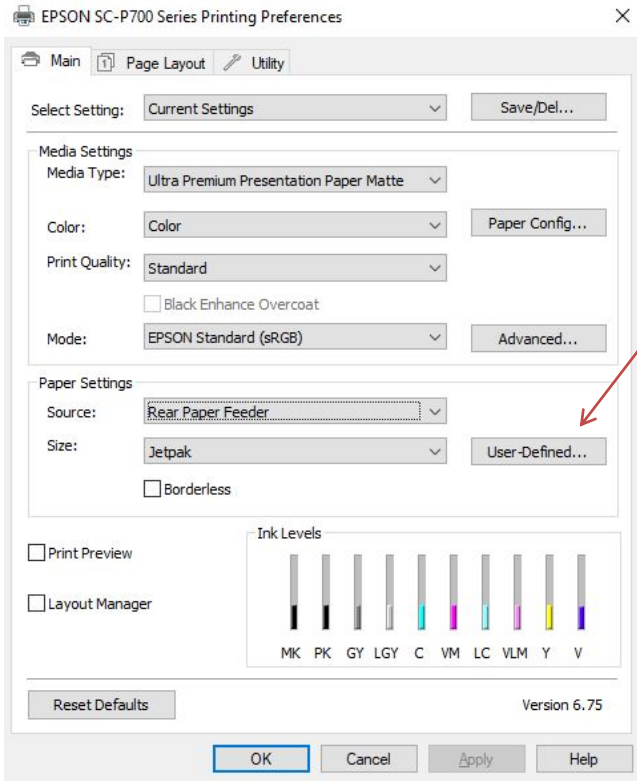
**Getting Started:** When making driver adjustments, be sure to use the "Epson SC-P700 Series"



**Reminder:** Driver changes should be made in both the **PRINTING DEFAULTS** and **PREFERENCES** settings.



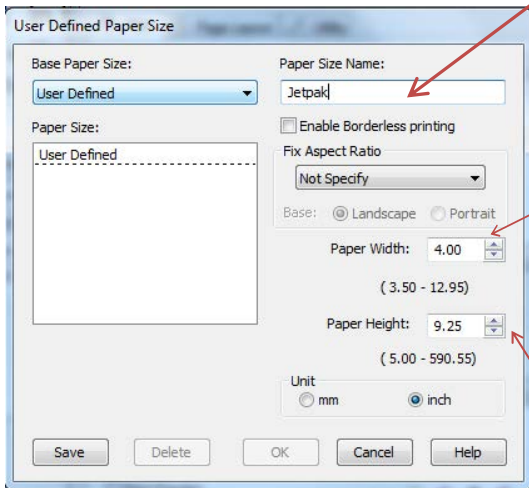
**Step 1:** Under the Paper Settings, choose "User-Defined"



**Diagram A. What is the width of my JetPak?** To determine the width of your JetPak, simply measure the leading edge of the card stock that is fed into the printer

**Step 2:** In the pop-up, create a paper size called "JetPak".

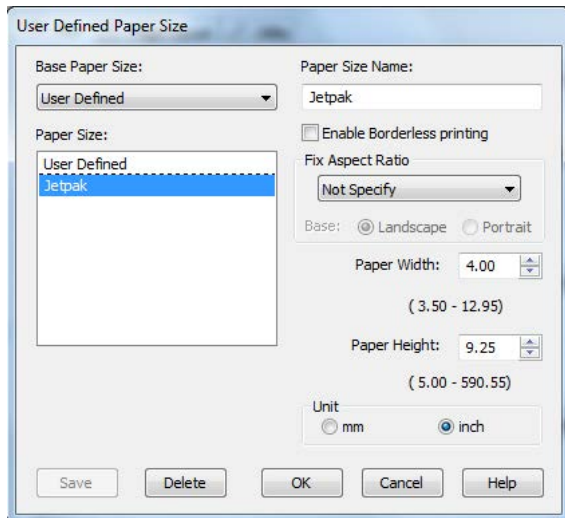
*Note: You will need the width and height of your card stock to complete this task (see diagram A).*



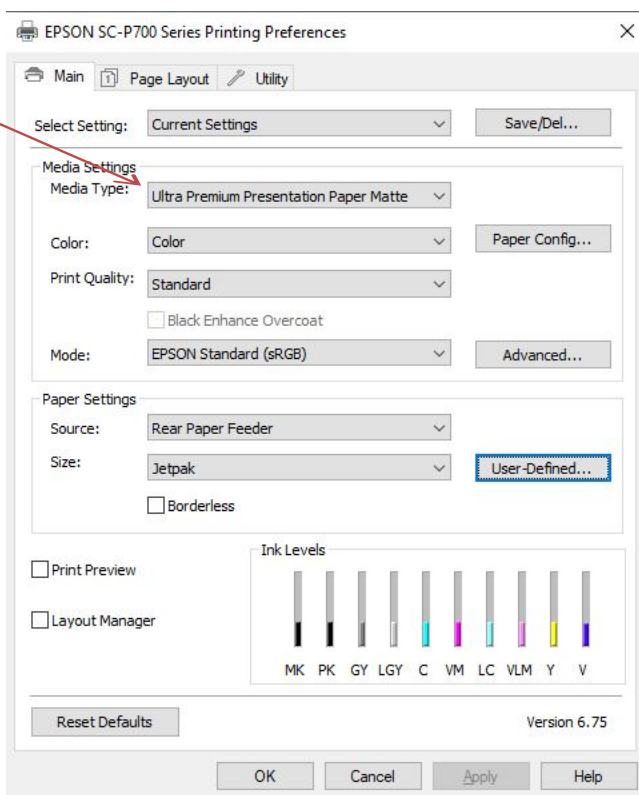
**Step 3:** Place the width and height of the JetPak in the correct fields.

**Step 4:** Press "Save"

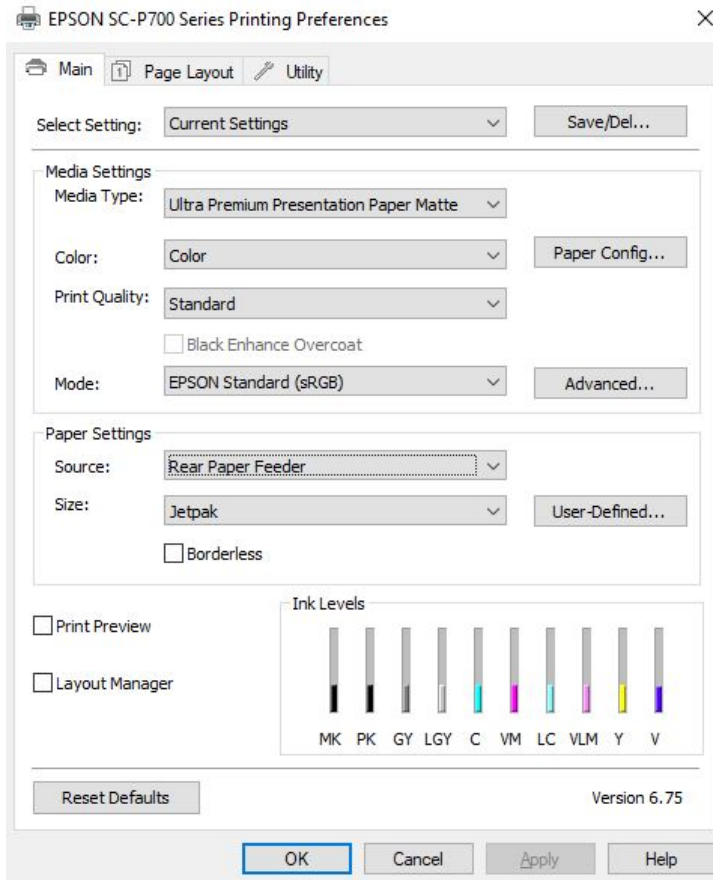
**Step 5:** The User-Defined Paper Size settings should now look like the image below, press "OK"



**Step 6:** Change the Media Type to "Ultra Premium Presentation Paper Matte"



## Step 7: The settings should look like the tab below



**Congratulations!** You are now ready to print using your Epson SureColor P700 printer.