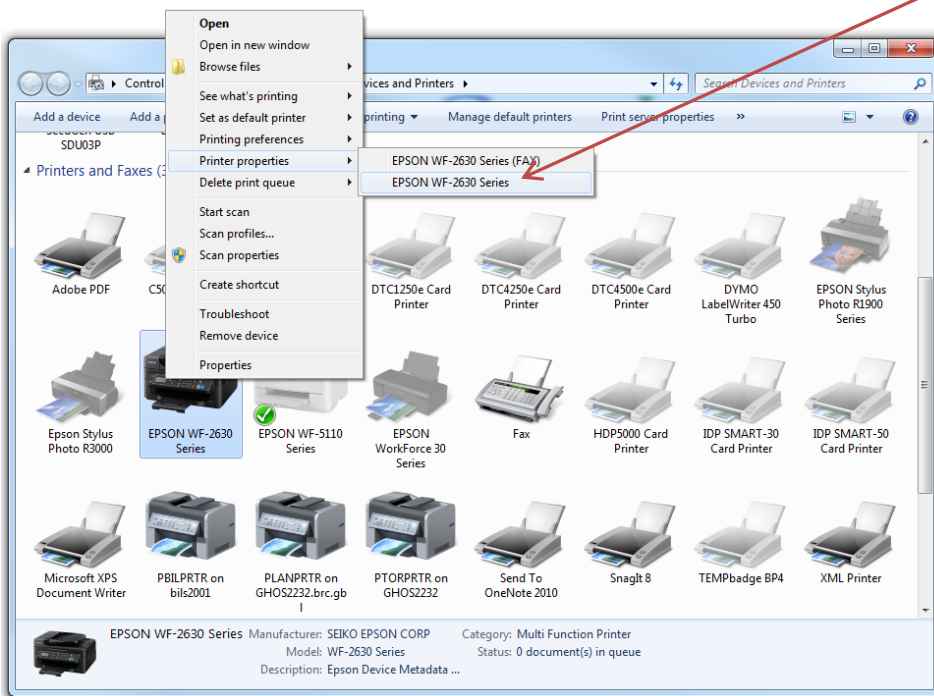




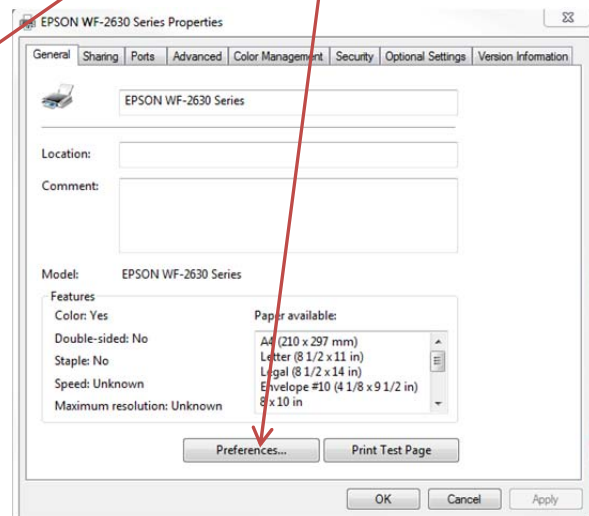
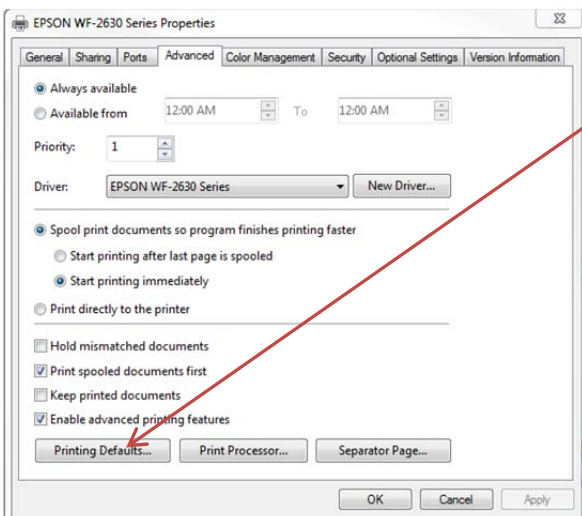
## Epson Workforce 2630 Driver Recommendations

Please note that these settings are guidelines and can be adjusted to meet your individual preferences.

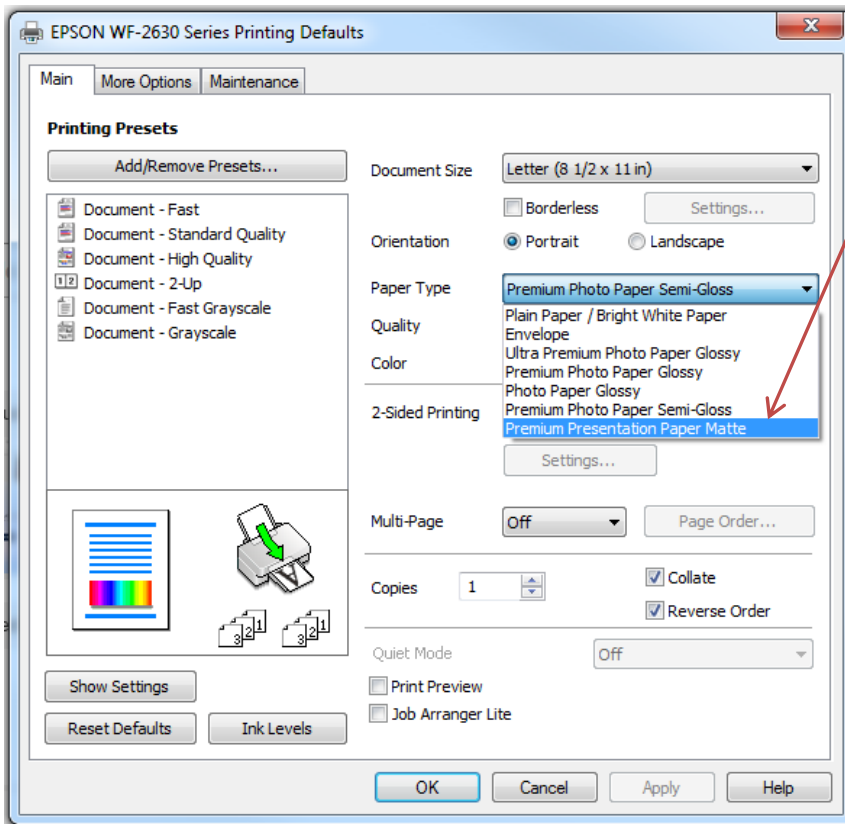
**Getting Started:** When making driver adjustments, be sure to use the "Epson WF-2630 Series" not the "Epson WF-2630 (FAX)" option.



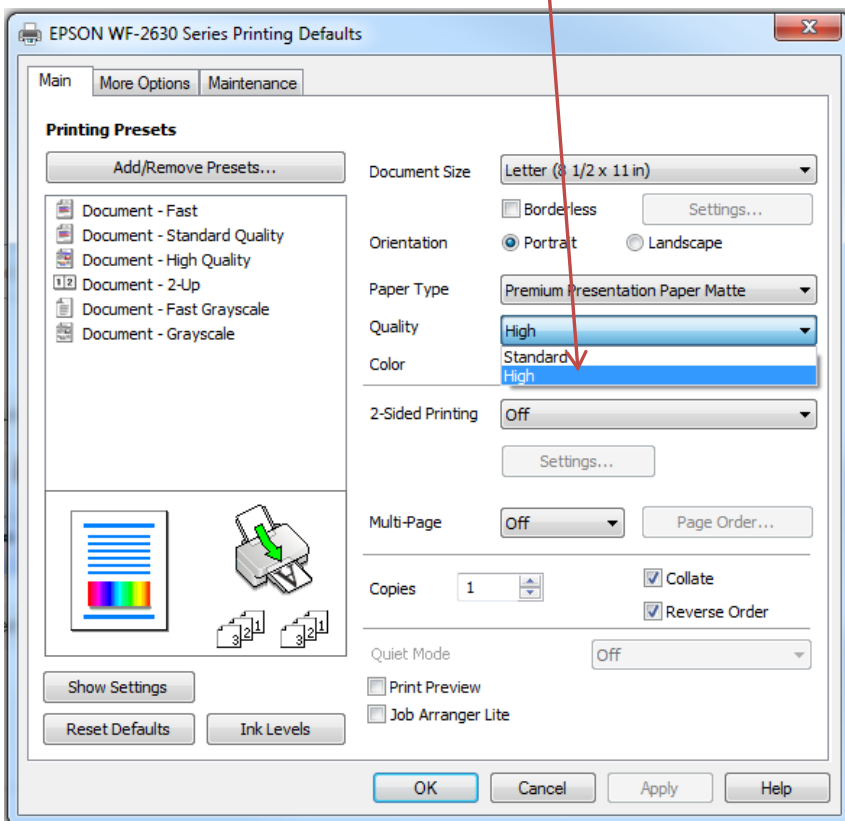
**Reminder:** Driver changes should be made in both the **DEFAULT** and **PREFERENCES** settings.



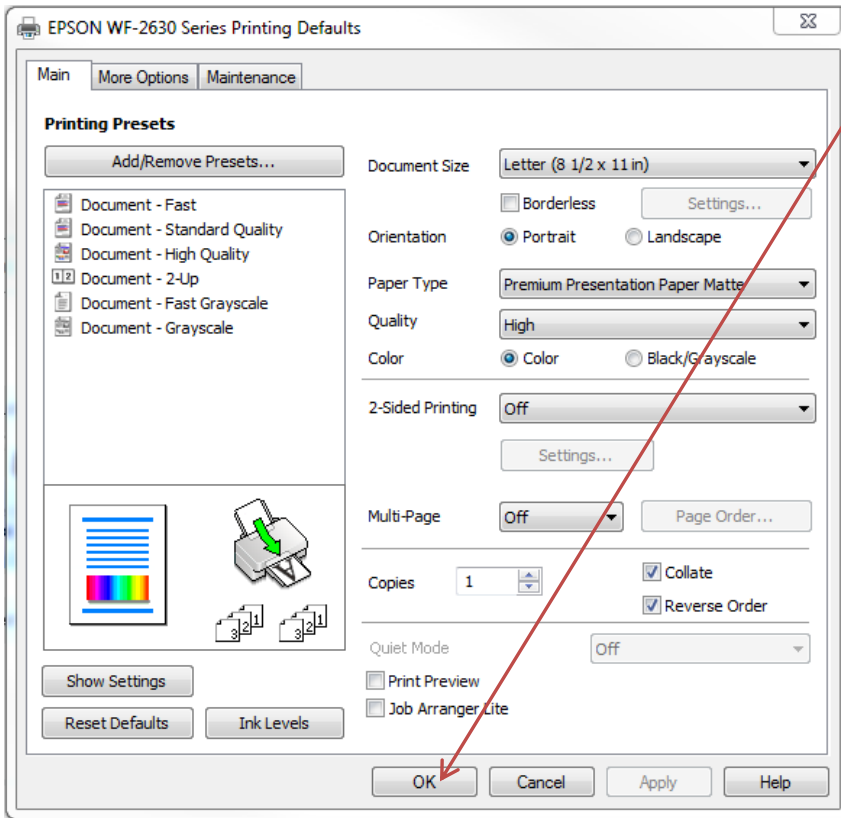
## Step 1: Change the Paper Type to "Premium Presentation Paper Matte"



## Step 2: Change the Quality to "High"



**Step 3:** The setting should look like the tab below, press "OK"



**Congratulations!** You are now ready to print using your Workforce WF-2630 printer.